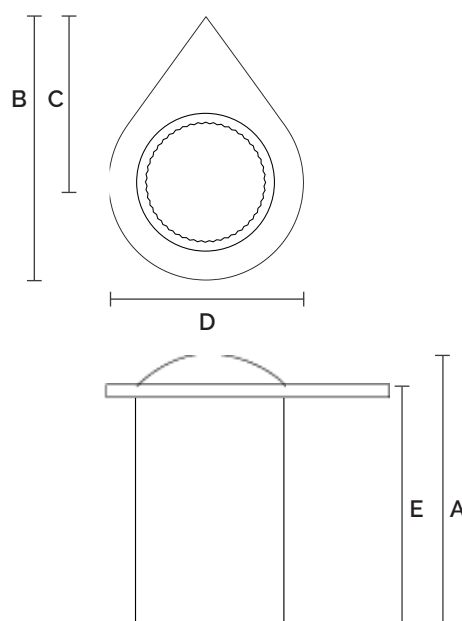


Wheel Nut Indicators

Long reach

• Material:	High-grade virgin polymer
• Melt temperature:	• 125°C/257°F
• Function:	<p>The Dustite LR® combines a loose wheel nut indicator and a protective cap, to indicate movement of the wheel nuts and to protect them from external elements such as water, dirt, road salts and rust.</p> <p>The Dustite LR® will also melt to indicate any overheating issues. This version is designed specifically for use on wheels with trims or step rings.</p>
• Application:	Mainly for commercial vehicles such as trucks, agricultural vehicles, dangerous goods transporters, etc. It is also used in the industrial sector, and wherever safety critical fasteners can loosen due to heavy vibrations.
• Main benefits	<ul style="list-style-type: none"> • Improves the safety of nut fittings. • 48 teeth for greater point to point accuracy • Enables quick and easy visual checks and monitoring. • Reduces maintenance costs by saving time and money. • UV additive to ensure stability and long life – tested to ISO 11507 standard.



See product technical
table on next page

Wheel Nut Indicators

Long reach

Item No.	Wheel nut size (mm)	Dimensions (mm)				
		A	B	C	D	E
CWB17	17	45.5	48.0	30.0	22.5	38.0
CWB19	19	45.5	48.0	30.0	25.0	38.0
CWB21	21	45.5	48.0	30.0	27.0	38.0
CWB22	22	45.5	48.0	30.0	28.5	38.0
CWB24	24	45.5	48.0	30.0	30.5	38.0
CWB27	27	39.0	82.0	60.0	34.0	33.5
CWB30	30	58.0	69.0	50.0	49.0	44.0
CWB32	32	58.0	69.0	50.0	49.0	44.0
CWB33	33	58.0	69.0	50.0	49.0	44.0